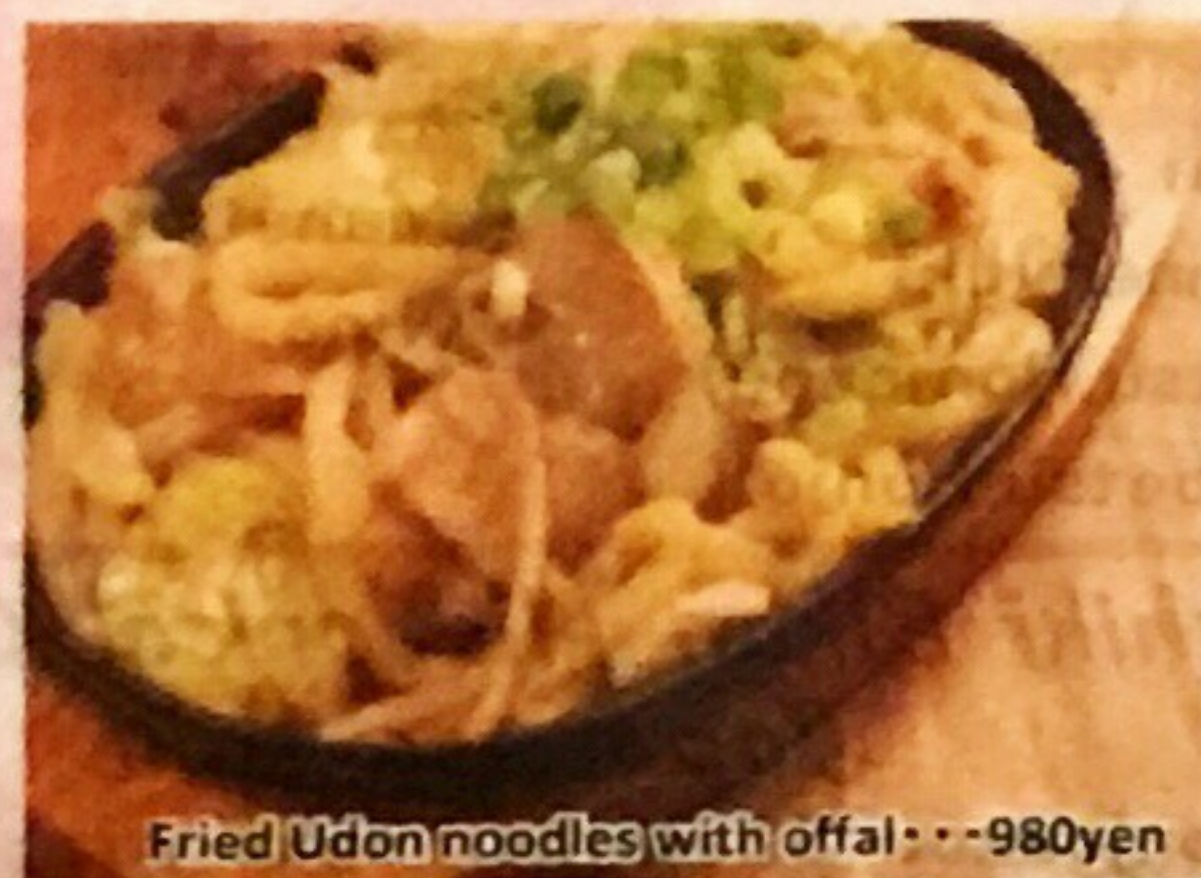


Speciality of Okayama

- ✓ Fried Udon noodles with offal 990yen



Fried Udon noodles with offal...980yen

- ✓ Hiruzen fried noodles with chicken 850yen

Original Teppanyaki Gourmet

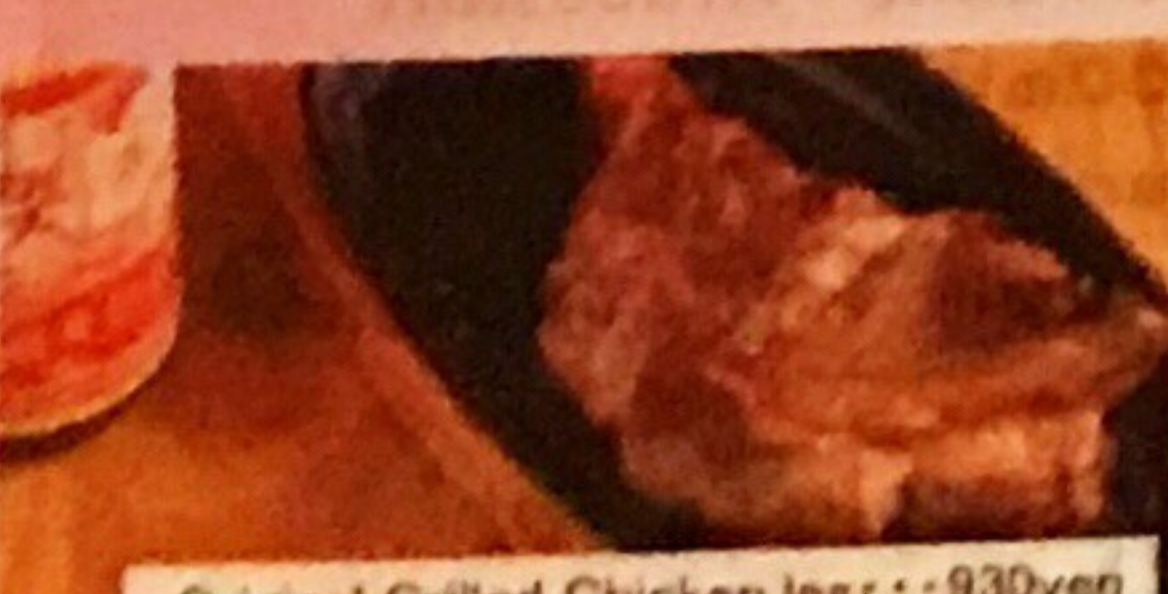
- ✓ Original Grilled Chicken leg 930yen
Chef's recommendation

- ✓ Original Grilled Young Chicken leg 920yen
Chef's recommendation

- ✓ Kibi Tsukune Chicken Hamburger steak(sauce or salt) 930yen

- ✓ Kibi Tsukune Chicken Hamburger steak(sauce)with egg 1030yen
✕Kibi is one of the area of Okayama.

Chicken raised in Western Japan & millet are used.
Our original menu



Original Grilled Chicken leg...930yen



Kibi Tsukune Chicken Hamburger steak...930yen



Original Grilled Young Chicken leg 920yen



Kibi Tsukune Chicken Hamburger steak(sauce)with egg...1030yen

Rice (We serve rice grown in Okayama)

- ✓ Dashi-cha with Chanja(Rice with dashi soup poured on it with spicy cod innards) 490yen
- ✓ Dashi-cha with pickles(Rice with dashi soup poured on it with pickles) 460yen
- ✓ Rice ball(2 pieces) 420yen
- ✓ A bowl of rice 250yen
- ✓ Miso soup 200yen
- ✓ Fried rice with Kimchi 800yen
- ✓ Rolled rice with spicy cod innards(1 piece) 250yen

Starter

- ✓ Camembert cheese 630yen
- ✓ Chilled cream cheese,original style 420yen
- ✓ Rolled omlette 420yen
- ✓ Assorted pickles 320yen
- ✓ Edamame (Boiled Miyazaki grown soybean pods) 420yen
- ✓ Sardinella zunasi marinated in vinegar 630yen
- ✓ Spicy cod innards 420yen
- ✓ Kimchi 330yen
- ✓ Chilled Tofu 330yen
- ✓ Today's delicacies 430yen

Salad

- ✓ Mini salad 320yen
- ✓ Time trip original salad 620yen
- ✓ Caesar salad with uncured ham 790yen
- ✓ Sliced tomatoes 500yen
- ✓ Stick vegetable salad 650yen

Grilled & Stir-fried dishes

- ✓ Grilled Okhots atka mackerel 650yen
- ✓ Grilled Sailfin sandfish(4 fishes) 630yen
- ✓ Grilled dried-overnight Squid 550yen
- ✓ Grilled dried-overnight Horse mackerel 550yen
- ✓ Chicken wing(3 pieces) 490yen
- ✓ Stir-fried Offal 850yen
- ✓ Fried noodles with pork & Kimchi 780yen
- ✓ Fried noodles with fatty pork 850yen
- ✓ Stir-fried fatty pork & bean sprouts 820yen
- ✓ Pork okonomiyaki 750yen

Deep fried dishes

- ✓ Fried fish "GANSU" 440yen
- ✓ Fried chicken wing (without batter) 490yen
- ✓ Fried garlic(without batter) 320yen
- ✓ Fried burdock root 530yen
- ✓ Fried gristle 530yen
- ✓ Fried shrimp 690yen
- ✓ French fries 390yen
- ✓ Fried chicken 840yen
- ✓ Lightly fried Tofu 480yen

Western style dishes

- ✓ Today's ajillo with baguette (4pieces of bread) 900yen
- ✓ Extra baguette 110yen

Beer



- ✓ Kirin Ichiban shibori draft beer
Pitcher 1.8liters 2140yen
(Small) *wine glass 370yen
(Medium) 550yen
(Large) 860yen
(Extra large) 1200yen

- ✓ Kirin Tanrei Gokujo draft low malt beer
(Medium) 360yen
(Large) 660yen
- ✓ Kirin Classic Lager beer (Medium bottle) 630yen
- ✓ Asahi Super Dry beer (Medium bottle) 630yen
- ✓ Shandy Gaff 630yen
- ✓ Kirin Zero Ichi 0.00% (Nonalcoholic beer) 400yen
- ✓ Kirin Hard Cedre 680yen

Highball

- ✓ Showa Highball 480yen
- ✓ Coke Highball 630yen
- ✓ Ginger Highball 630yen



Hoppy (Beer flavored drink)

- ✓ Hoppy & Shochu spirits
(Made from rice, 25% alc.) 550yen
- ✓ Another Shochu 330yen

Bourbon whisky

- ✓ Old Crow 40%
(whisky and water, on the rocks) 650yen
(whisky and soda) 750yen
- ✓ IW Harper
(whisky and water, on the rocks) 750yen
(whisky and soda) 850yen



Whisky

- ✓ White Horse (on the rocks, whisky and water, whisky and hot water) each 650yen
- ✓ Yamazaki (Non vintage single malt) 700yen
- ✓ Johnnie Walker Black Label 700yen



Sour

- ✓ Lemon/Lime/Green apple/Ume (Japanese apricot/Grape/Calpis) (Similar to Yogurt flavor) each 530yen
- ✓ Fresh-squeezed lemon sour 650yen
- ✓ Olonamin C sour 650yen



Japanese sake

- ✓ Kihei 1 Go (180ml) 480yen
2 Go (360ml) 890yen

Cocktail

- ✓ Gin and tonic
 - ✓ Cassis and orange
 - ✓ Moscow mule
 - ✓ Screwdriver
 - ✓ Mangoyan orange
 - ✓ Gin Rickey
 - ✓ Cassis and Oolong tea
 - ✓ Fuzzy navel
 - ✓ Peachtree Fizz
- each 590yen

Glass wine ~ Mercian Franzia ~

- ✓ Rde / White each 550yen

Shochu spirits

(On the rocks
Shochu and water
Shochu and hot water)

- ✓ Shochu and Oolong tea 650yen
- ✓ Iichiko (Made in Oita pref.) 600yen
- ✓ Nikaido (Made in Oita pref.) 600yen
- ✓ Kobiki Blue 690yen
- ✓ Satsuma Kobiki 700yen
- ✓ Shiranami (Made in Kagoshima pref.) 600yen
- ✓ Kurokirishima
(Made in Miyazaki pref.) 670yen
- ✓ Satsuma Shimabijin
(Made in Kagoshima pref.) 600yen
- ✓ Oh Okadai (Made in Okayama pref.) 800yen
*Made from sweet potato grown in Okayama University's field
- ✓ Rento (Made in Kagoshima pref.) 650yen
- ✓ Shiro (Made in Kumamoto pref.) 650yen
- ✓ Sakehitosuji millet Shochu
(Made in Okayama pref.) 650yen

Ume Liqueur

- ✓ On the rocks / And water 490yen
- ✓ And soda 590yen

Soft drink

- ✓ Oolong tea 400yen
- ✓ Orange juice 440yen
- ✓ Grape juice 440yen
- ✓ Cola 440yen
- ✓ Ginger ale 440yen
- ✓ Japanese soda 440yen
- ✓ Olonamin C (Japanese energy drink) 390yen
- ✓ Calpis 440yen

Okayama's selected cold Japanese sake

All kinds 60ml for 300 yen, 1 Go (180ml) for 900 yen.

Water from Takahashi River	Asahi River	Yoshi River
✓ Chikurin junmai	✓ Manetsu	✓ Momonosato
✓ Karakuchi Mannenyuki	✓ Nine	✓ Sakehitosuji (Junmai)
✓ Hihou (Tokubetsu Honjousou)		
✓ Shiroise (Tokubetsu Honjo)		

Kurashiki Bikan Historical Quarter's Japanese sake

✓ Mannenyuki Honjousou "Sueshibori sake" Arabashiri"	60ml 420yen	1 Go (180ml) 1260yen
Mannenyuki Honjousou "Gekikara Genshu"	60ml 370yen	1 Go (180ml) 1110yen

Keep your own bottle shochu

Barley	Potato		
✓ Iichiko	1.8 l	4990yen	
✓ Nikaido	1.8 l	4990yen	
✓ Kobiki blue	1.8 l	5100yen	
✓ Kurokirishima	1.8 l	5300yen	
✓ Shiranami	1.8 l	4500yen	
✓ Satsumakoboki	1.8 l	5200yen	

Bottle Shochu

Barley	Potato		
✓ Nikaido	900ml	3200yen	
✓ Kurokirihima	900ml	3200yen	
✓ Kobiki blue	900ml	3100yen	
		*wih water / with hot water	550yen

Bottle Japanese sake

- ✓ Mannenyuki Honjousou Sueshibori sake "Arabashiri" 500ml 3200yen
- ✓ Mannenyuki Honjousou "Gekikara Genshu" 500ml 2700yen

60 minutes all-you can drink course for 1,000yen (tax not included)

Last orders should be 10 minutes before the end of the course.

You must order at least one dish per one person during the course.

Add 560 yen for every 30 minutes after overtime.

tax not included